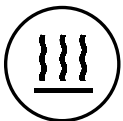


Thermotouch 9.2mG thermostat features a sleek white glass display and simple, manual underfloor heating controls

The 5215 and 5216 are manual thermostats that benefit from temperature control features that you would expect from a programmable thermostat, such as temperature limits and calibration.



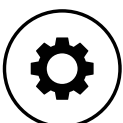
Specially designed for accurate, manual control of electric underfloor heating systems



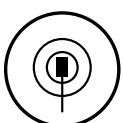
Benefit from simple on/off controls and easy, manual temperature adjustment



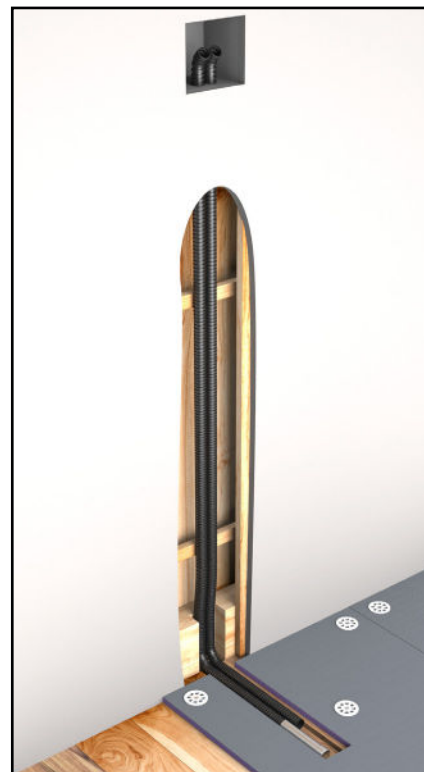
Lock the screen to prevent tampering by holding the up and down arrows for 5 seconds



Adjustable settings including temperature limits and temperature calibration to improve efficiency



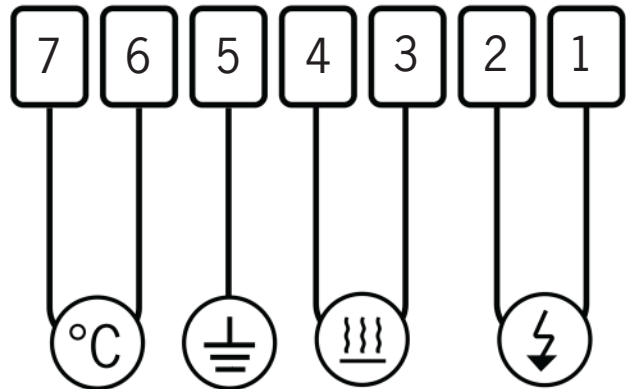
Built in ambient temperature sensor and external floor sensor for accurate temperature management



Floor temperature sensor should be installed in a conduit, within a clear area of the floor, and away from any other temperature influences.

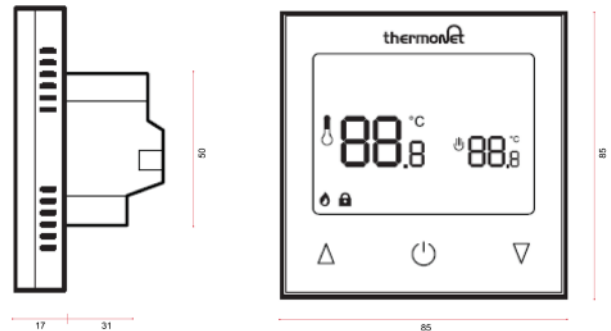
Wiring diagram

- ❶ 220-240V AC Supply Live
- ❷ 220-240V AC Supply Neutral
- ❸ Underfloor Heating Neutral
- ❹ Underfloor Heating Live
- ❺ Earth
- ❻ Floor sensor (not polarity sensitive)
- ❼ Floor sensor (not polarity sensitive)



Box contents

- 1 x Thermotouch 9.2mG
- 1 x Installation guide
- 1 x 3m floor temperature sensor probe
- 1 x 2m sensor conduit
- 2 x Fixing screws



Technical data

Supply voltage	220-240V
Maximum load	16A (3600W)
Backup storage	EEPROM (approx. 1 year backup)
Temperature range	5 ~ 80°C (0.5°C increments)
Accuracy	±0.5°C
Sensor rating	NTC 10kΩ @ 25°C
Consumption	2W
Warranty	3 years
IP rating	IP20
Width	85mm
Height	85mm
Depth	46mm (31mm in wall)